



Principal's Corner

Welcome to the 2017-18 school year! We are off to a wonderful start to the new year, although the weather and air quality could be better! Looking ahead we have Back to School Night on September 13. Grades 2 and 3 will begin at 5:30, Grades 4 and 5 will begin at 6:10. Grades K-1 and 6th will begin at 6:50 and 6th grade parents will meet at 7:30 in the MPR for Sly Park Information.

Susie Carrell, our PBIS Team, and all staff are explicitly teaching our school wide expectations over the first few weeks of school.

You may have noticed that we have a new office team. Vanessa Soriano is our attendance/front office secretary and Michele Salisbury has returned to BLE as the principal's secretary.

We also welcome a number of new staff members, too many to list in this newsletter, but they are excited to join the BLE community.

On behalf of the Birch Lane staff, we look forward to a great school year!

Positive Behavior Information (PBIS) Night

Sept. 26th, 6-7 PM in the BLE library. Please join us for an interactive dialogue with our school community about how we support our students through the lens of Positive Behavior Interventions and Supports. We want to HEAR FROM YOU about what it means to have equitable, consistent, predictable, positive and safe procedures at BLE. We'll also show student created videos, demonstrate Eagle expectations stations, and you can meet the Eagle. We look forward to seeing you!

- Jim Knight and the PBIS Team

We Need You!

We need volunteers to help with events and programs. It's a fun way to connect with your kids and the school. Sign up at the Birch Lane PTA Table at Back to School Night on 9/13 and enjoy some simple refreshments. If everyone signs up to help at JUST one event – we would be set!



CALENDAR



- ❖ Wed. 9/13. Back to School Night
 - 5:30-6:10 PM Grades 2 and 3
 - 6:10-6:50 PM Grade 4 and 5
 - 6:50-7:30 PM Grades K, 1, 6
 - 7:30 PM Grade 6 Sly Park Mtg.
- ❖ Wed. 9/20. Chipotle BLE Family Fun Fundraiser (4-8 PM)
- ❖ Tues. 9/26. PBIS Night (6:00 PM)
- ❖ Thurs. 9/28. Picture Day
- ❖ Sat. 9/30. Garden Work Day
- ❖ Wed. 9/4. PTA Meeting (7 PM)
- ❖ Wed. Davis Parent University Lecture (7 PM)
- ❖ Friday, 10/13. Outdoor Family Movie Night**, 6 -9 PM (we need volunteers and [business sponsors!](#))
- ❖ Wed. 10/18. Family Fun Dinner Jack's Urban Eats (4-9 PM)
- ❖ Wed. 10/25. PTA Scarecrow Breakfast & Bidding Bazaar**
- ❖ Sat. 10/28. PTA Fall Festival**
- ❖ Wed. Nov. 1. PTA Meeting (7 PM)
- ❖ Thursday, Nov. 2. PTA Science Night**

For a full list of events, see the PTA calendar online at birchlaneppta.org

** event is volunteer-run and can't happen without your help! To volunteer - please email the PTA at birchlaneppta@gmail.com



Outdoor Movie Night is Friday October 13



MOVIE OPTION 1

Last year we had more than 150 families attend!

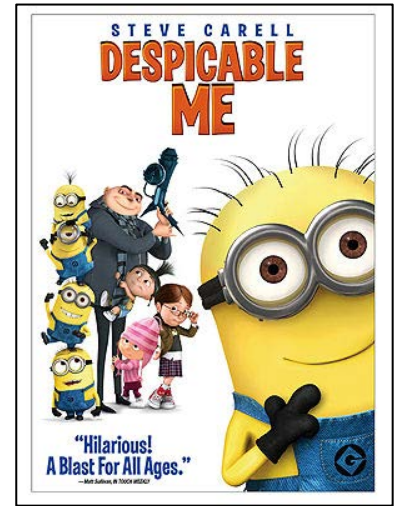
Come enjoy a movie outdoors on the lawn in the Quad with your school friends on October 13. Time: 6 to 9 PM. Bring low chairs, blankets, pillows, stuffed animal friends, blow-up camping mattresses! Pizza, drinks, popcorn, and movie snacks will be sold at the event. Entrance to the event is **FREE**. Donations are requested to help cover costs - but not required.

Which movie should we show?

VOTE by emailing

birchlaneppta@gmail.com

♥ We are seeking business sponsors to help pay for this event. Please email PTA if you can help!



MOVIE OPTION 2

PTA Family Science Night Thursday November 2

Birch Lane Parents! Birch Lane PTA is planning a Family Science Night, featuring scientists in our own school community.

Do you work in a scientific field and have something to share with Birch Lane students? We are looking for scientists in a variety of fields to host an informative or interactive table at Science Night. Now is your chance to show our kids the cool things you do at work and why it is important for our society.



Not a scientist? We'd still love your help! We will need volunteers that evening to help facilitate the event. Keep an eye out for a SignUpGenius coming soon, or contact Leslie Umali (vicepresident@birchlaneppta.org) with any questions or to volunteer to help.



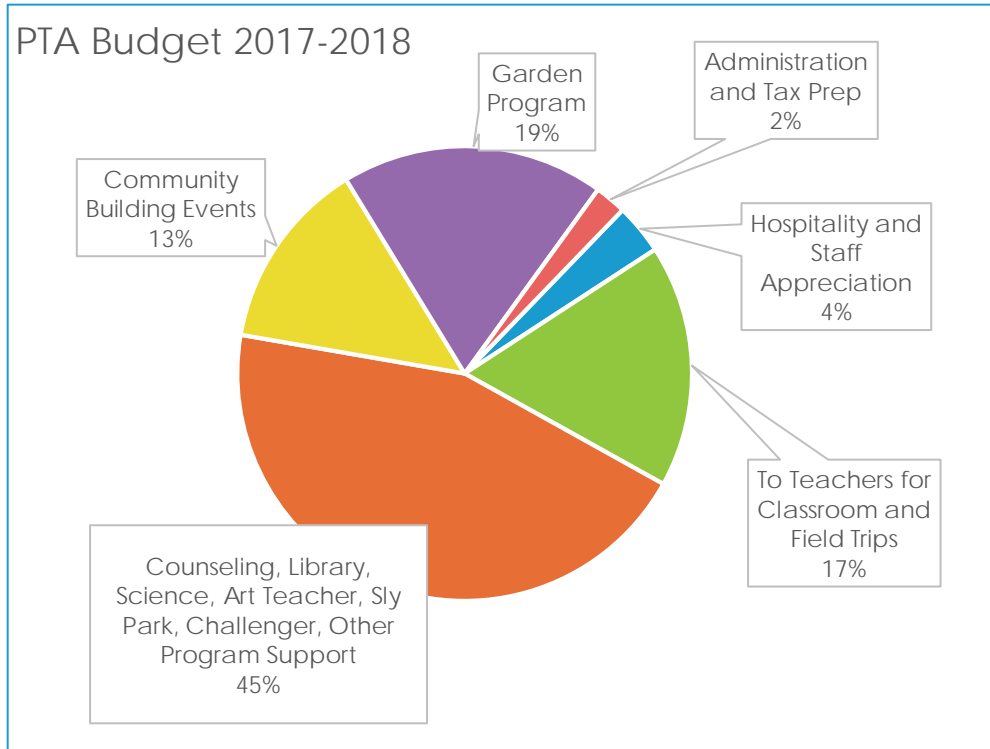


Garden Work Day September 30 9 AM to 1 PM

Bring the whole family and help put in a fall garden, learn about the teaching orchard, and the edible schoolyard. Donuts, coffee, and cold water will be provided. To help, please contact Jenn Rogge: at: birchlanegardens@gmail.com to volunteer and look for more information on this soon.



PTA's Fall Direct Donation Drive is Starting Now!



DJUSD can't provide funding for all the programs and resources at Birch Lane. We need parent donations to close the gap.

Due to your support last year, PTA is able to **double** what we give to teachers – this year we are giving \$500 to each of the 25 school classrooms, (Neighborhood AND Montessori). Look for envelopes and more information on donating coming home in backpacks soon.

Ready to donate now? Donate online at www.birchlaneppta.org. We are grateful for any amount you can give, but we are requesting \$100 per child. Please remember to use Amazon smile and Nugget Scrip cards!

Questions? Email the PTA at birchlaneppta@gmail.com or see our website at birchlaneppta.org website for lists of board and committee members.



Hurricane Harvey: The California PTA supports all the children, families and communities that have been affected by Hurricane Harvey. You can learn more about how you can help contribute to the efforts of Texas PTA online at www.txpta.org/donate

